

Industrial control measurements of high chromium steel rolls heat treatment

Karpe, Blaž; Novak, Sergej; Nagode, Aleš; Kožuh, Stjepan; Pavlič, A.; Rečnik, Simon; Kosec, Borut

Source / Izvornik: **Metalurgija, 2018, 57, 279 - 282**

Journal article, Published version

Rad u časopisu, Objavljena verzija rada (izdavačev PDF)

Permanent link / Trajna poveznica: <https://um.nsk.hr/um:nbn:hr:115:755865>

Rights / Prava: [In copyright](#)/[Zaštićeno autorskim pravom](#).

Download date / Datum preuzimanja: **2024-12-18**



SVEUČILIŠTE U ZAGREBU
METALURŠKI FAKULTET
UNIVERSITY OF ZAGREB
FACULTY OF METALLURGY

Repository / Repozitorij:

[Repository of Faculty of Metallurgy University of Zagreb - Repository of Faculty of Metallurgy University of Zagreb](#)



INDUSTRIAL CONTROL MEASUREMENTS OF HIGH CHROMIUM STEEL ROLLS HEAT TREATMENT

Received – Primljeno: 2017-12-15

Accepted – Prihvaćeno: 2018-03-04

Original Scientific Paper – Izvorni znanstveni rad

In this paper, industrial control measurements of the heat treatment of high chromium steel (HCS) rolls is presented. Measurements of the gas fired car bottom chamber furnace Bosio PP-KP 70/1150 were carried out in the company Valji d. o. o., Štore, Slovenia. Temperature in the individual heating zones of the furnace, temperatures of the roll surface, furnace external walls, and gas consumption was monitored throughout the whole process of heat treatment. The temperature profile of the rolls cross-section was calculated using computer simulation. Periodical measurements of CO and NO_x emissions were also carried out with the aim of combustion evaluation and ecological integrity. The successfulness of heat treatment was examined through microstructure observation, hardness measurement, and the amount of retained austenite in the heat treated rolls.

Key words: high chromium steel (HCS) rolls, heat treatment, microstructure, industrial measurements, control

INTRODUCTION

Company Valji d.o.o. is a manufacturer of industrial rolls for hot and cold rolling of sheet metal and processing of plastics and rubber. In the company strive for the development of new materials and technologies, achieving top quality, and high production. In the paper, control technical measurements of the gas fired car bottom chamber furnace (type PP-KP 70/1150 Bosio d.o.o.) is presented. The furnace was introduced into production in 2008 and used for heat treatment of various types of rolls. Due to the demanding heat treatment, the control measurements of the furnace were performed on a batch of high chromium steel (HCS) rolls. With additional thermocouples, temperature of distinctive areas of the roll surfaces, temperature of individual heating zones in the furnace and temperature of the outer walls was monitored. Temperature and temperature distribution in the roller cross-section was calculated by computer simulation (FDM) [1,2]. From the point of view of cost estimation of the heat treatment, the consumption of natural gas was monitored throughout the entire heat treatment process. As each energy-intensive production is inextricably linked to the release of harmful emissions into the atmosphere, periodic measurements of CO and NO_x gas emissions were also carried out.

Rolls used for hot sheet metal rolling on continuous rolling mills are divided according to their position (stand) in the rolling mill [3]. For initial roughing stand,

high chromium iron rolls (HCI), high chromium steel rolls (HCS) or high speed steel rolls (HSS) are used [4]. For initial finishing stands, HSS rolls, and to a lesser extent, the HCI rolls are most commonly used, while for the final finishing stands the rolls with the working shell made of high-alloyed nickel iron alloy with graphite [5] (ICDP-Indefinite Chill Double Pour) or highly alloyed nickel-iron alloy with niobium and vanadium additions (CE-ICDP (carbide-enhanced ICDP rolls) are most commonly used [6]. All types of the mentioned rolls are also manufactured in the company Valji d.o.o..

HIGH CHROMIUM STEEL ROLLS

High chromium steel rolls are three layer type rolls (Figure 1) with the pearlite-ferrite nodular cast iron structure (NF 77) of the core, grey cast iron with lamellar graphite structure of intermediate layer and high chromium steel working shell with hardened martensitic structure, and approximately 15 % of hard eutectic carbides M₇C₃ (M = Cr, Fe), and small amount of hard vanadium and molybdenum (MC and M₆C) primary carbides [7]. Chemical composition of the working shell is given in Table 1.

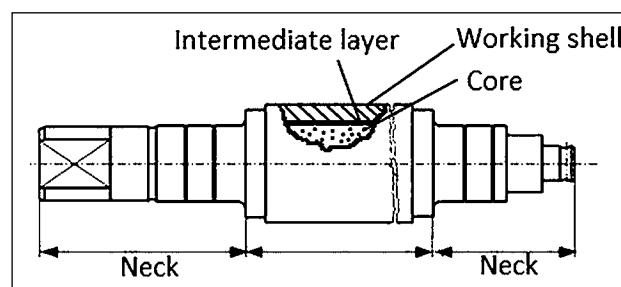


Figure 1 Roller cross section [7]

B. Karpe, S. Novak, A. Nagode, A. Pavlič, S. Rečnik, B. Kosec (e-mail: borut.kosec@ntf.uni-lj.si), Faculty of Natural Sciences and Engineering, University of Ljubljana, Ljubljana, Slovenia, S. Kožuh, Faculty of Metallurgy, University of Zagreb, Sisak, Croatia.

Table 1 **Chemical composition of HCS rolls working shell / Wt.%**

	C	Si	Mn	Cr	Ni	Mo	V
min	1,0	0,5	0,6	10,0	1,0	1,0	0,2
max	2,0	1,0	1,2	13,0	2,0	2,0	0,5

The minimal thickness of the working shell of the HCS rolls is 70 mm. The HCS rolls have high compressive strength and toughness and are distinguished by their high wear resistance and high resistance to thermal fatigue [8]. Excellent oxidation resistance at elevated temperatures and the formation of a stable oxide film on a working surface, that does not peel and prevents the hot steel sheet from bonding to the roller surface, gives them the main advantage when used as rolls in the first roughing stands of continuous mill lines or single reversible roughing stands.

MANUFACTURING PROCESS

High chromium rolls (HCS) are cast through a horizontal or vertical centrifugal casting process, in which the rotation of the mould (≈ 470 rpm) creates a sufficiently high centrifugal force to distribute the melt along the inner periphery of the hollow cylindrical die (Figure 2). After the preparation of the melt, roll barrel working shell is poured, followed by the intermediate layer, which has the task to improve adherence between the core and working shell of the roll. When two-layer shell solidifies and reaches prescribed temperature it is transferred to the casting pit together with the die and placed vertically on the pre-prepared mould of the lower roller neck. The mould of the upper roller neck, feeding system, and pouring basin are installed.

Temperatures of the working shell and the melt for the roller core play an essential role when the core of the roller is cast [9]. The temperature interval in which the roller working shell and the core are well joined is very narrow, only ± 10 °C. At temperatures too low, the working shell and the core will not agglutinate, and at temperatures too high, excessive re-melting of the inter-

mediate layer or even working shell occurs. Heat treatment of high chromium steel rolls is very time consuming process, lasting several weeks. Rolls are slowly heated up to 970 °C, into the two phase field ($\gamma_{Fe} + M_7C_3$).

Since the rollers are thick-walled castings with a very large mass (> 35 tonnes), it is necessary to retain the heat several times in order to equalize the temperature throughout the roller cross-section. The most critical temperature interval is below 500 °C, where the steel is not yet sufficiently plastic to compensate the thermal stresses due to unequal thermal expansion of the core and working shell and the release of residual casting stresses. Namely, both types of stresses have the same sign and are aggregated during the heating process, which can lead to cracks and consequently useless roller. Austenitization takes place at a temperature of 980 °C/20h. During annealing, the dendritic structure of austenite changes to a polygonal structure with surrounding network of eutectic carbides (Figure 3).

High chromium steels are characterized by the relatively high stability of austenite in a temperature interval between 350 and 525 °C. With rapid cooling from the austenitization temperature down to 450 °C and subsequent slow heating (10 °C/hr) up to 520 °C/12hr, the conditions for precipitation of secondary carbides from the austenite matrix are created. In the next phase of heat treatment, rolls are cooled to 135 °C, below the martensite start temperature ($M_s \approx 200$ °C), and the part of the austenite is transformed into martensite.

The amount of retained austenite is still high (> 40 %) at this stage and increases with the temperature from which the rolls are quenched and with the carbon concentration in the steel. By repeated heating to a temperature of 500, 505 and 510 °C, and intermediate cooling down to an ever-lower temperature as in the first cooling stage, austenite is progressively transformed into martensite, which is then tempered in the next heating step. Simultaneously, fine secondary carbides $M_{23}C_6$ precipitate from retained austenite and strengthen the matrix. The final microstructure of the



Figure 2 Centrifugal casting of the working shell

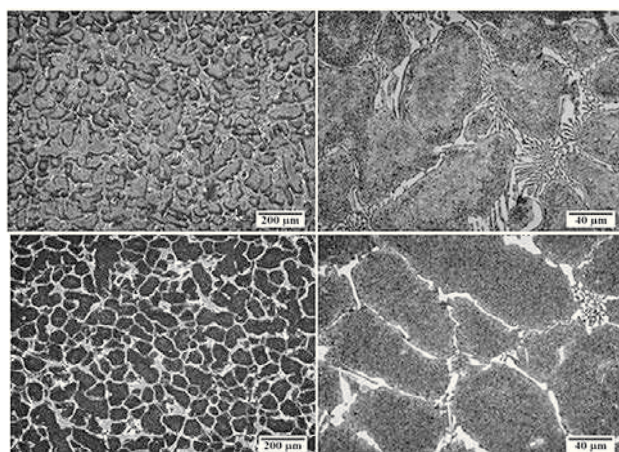


Figure 3 Microstructure of working shell of HCS rolls. Before heat treatment (above), after heat treatment (bellow)

roll working shell consists of a tempered martensitic matrix with uniformly distributed secondary carbides $M_{23}C_6$, and small amount of MC and M_6C vanadium and molybdenum primary carbides surrounded by a network of eutectic carbides M_7C_3 .

EXPERIMENTAL MEASUREMENTS

Chamber furnace Bosio, type PP-KP 70/1150 serves in the company Valji d.o.o. for the heat treatment of cast rolls (Figure 4). Fuel for heating is natural gas. The temperature in the furnace is controlled by the three thermocouples (PtRh-Pt; Type S) mounted on the furnace ceiling. Burners (12 pcs with 270kW, maximum gas power 330 Nm³/hr) are installed in a horizontal line on both side walls of the furnace, and divided in three temperature zones with individual regulation. The combustion air is preheated to a maximum temperature of 450 °C. Insulation of oven walls consist of: 1. Insulfrax SF layer, thickness 13 mm, and 2. layer Fiberfrax Prismo-Block, quality Durablanket S 170/1200, thickness 300 mm [7].

The measurement of the surface temperature of the rolls was carried out on two equal HCS rolls, grade CCrS NF 77 (dimensions 1 200 x 2 000 mm, weight of individual roller 37,5 tons), with K-type thermocouples. In order to prevent direct exposure to radiation, thermo-

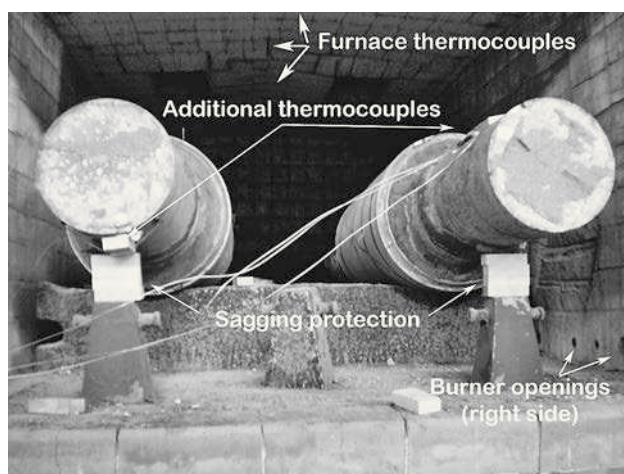


Figure 4 Interior of the furnace chamber

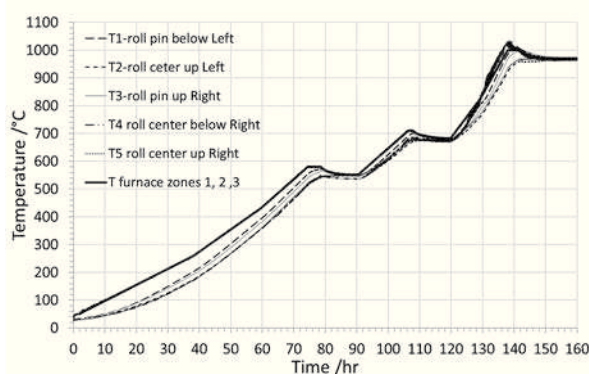


Figure 5 Temperatures of rolls surfaces and furnace heating zones

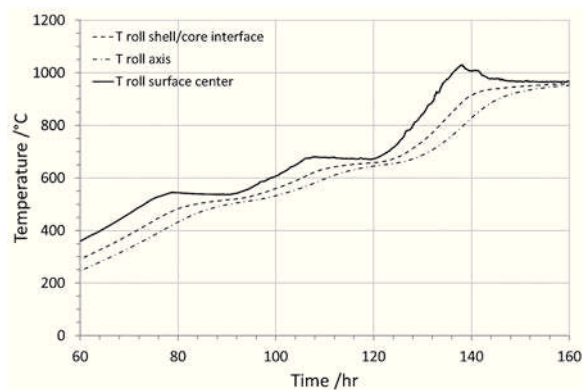


Figure 6 Temperature profile of the roller cross section.

couples were protected by high temperature resistant insulating wool ISOFRAX® and refractory brick. The roll necks are lined up due to the sagging at elevated temperatures under the influence of their own weight. Figure 5 shows the temperature profile on the surface of the rolls measured by the additional thermocouples. The temperature at the roller neck surface is slightly higher, which is understandable, since higher thermal conductivity of the roller core alloy (NF 77), smaller diameter, and the greater thickness of the gas layer above it. A slightly higher temperature on the lower part of the working shell is attributed to the convective influence, due to the direct flow of flue gases from the burners.

The measured temperatures of the process in the furnace, the temperatures on the surface of the roller and the set temperature are well-matched, as no major temperature deviations have been detected.

On the basis of the measured temperatures at various areas of the outer walls and the ceiling of the furnace, it was found, that the furnace does not have distinct thermal bridges, indicating an uncontrolled leakage of the furnace atmosphere or degradation of the insulation.

The consumption of natural gas for the heat treatment of a batch (75 ton) of two HCS rolls was 18 231 m³. The temperature difference between the surface and the interior of the roll was calculated by the finite difference method and computer simulation (Figure 6). In the low temperature range (< 500 °C), temperature differences between outer layers and interior of the roll can be significant, resulting in substantial thermal stresses [10]. Increasing the heating rate would dangerously increase the risk of roll cracking. Higher concentrations of CO at low temperatures in the furnace are the result of incomplete combustion due to local flame cooling, when still incompletely reacted hot flue gasses touch the cold pads and rolls. The auto-ignition temperature of CO is 609 °C and, the CO concentration is rapidly reduced at a temperature above 600 °C. On the other hand, the concentration of NO_x with increasing combustion temperature in the furnace increases, which is in accordance with the theory of NO_x formation.

The main goal of the heat treatment of HCS rolls is the decomposition of retained austenite in the working shell structure during tempering. The amount of re-

tained austenite is determined by the Feritscope® measuring device, which works on an inductive measurement of the magnetic permeability of the alloy. The measurement is relative to the standard and the proportion of the retained (non-magnetic) austenite acceptable low, if the measured value above 60. Table 2.

Table 2 **Hardness and Feritscope® measurements**

Condition	Hardness /HRC	Feritscope®
As cast	55,09	41,14
Quenched	57,69	72,51
Tempered	51,23	77,12

CONCLUSIONS

Standard material testing of HCS rolls and control measurements of the gas fired car bottom chamber furnace Bosio PP-KP 70/1150 were carried out. From the product quality point of view the heat treatment was successful. On the basis of the measured temperatures at different areas of the outer walls and the ceiling it was found that the furnace has no distinct thermal bridges, which would indicate an uncontrolled leakage of the furnace atmosphere or degradation of insulation and consequently unhomogenous temperature profile in the furnace. Only minor maintenance work has to be done on the selant between bottom car and furnace wall. By measuring the surface temperatures on the rolls and calculating the temperature profile over the entire cross section, we confirmed that the rolls were fully heated to the prescribed temperature. The increase in furnace productivity due to higher heating rate at lower temperatures could dangerously increase the risk of thermally induced roll cracking.

Regular control measurements of all production facilities contribute to quality assurance and reduce unnecessary costs due to production failure.

LITERATURE

- [1] Shercliff, H. R. Modeling and Selection of Surface Threatments for Steels, *Advanced Engineering Materials* 4 (2002) 6, 397-402.
- [2] L. Michalski, K. Eckersdorf, J. Kucharski, J. McGhee Temperature Measurement, John Wiley & Sons, Chichester, 2001.
- [3] Zihenberger, K. H., Windhager, M. Recent developments in HSM rougher rolls-risks and chances, Eisenwerk Sulzau-Werfen, Tenneck, Austria., The Material Science And Technology Conference And Exhibition, Pittsburgh, Pennsylvania, USA, 2005, 38-41.
- [4] Garza-Montes-de-Oca, N.F., Colás, R., Rainforth, W.M. On the damage of a work roll grade high speed steel by thermal cycling, *Engineering Failure Analysis* 18 (2011), 1576–1583.
- [5] Drobne, M., Vuherer, T., Samardžić, I. Glodež, S. Fatigue crack growth and fracture mechanics analysis of a working roll surface layer material, *Metalurgija* 53 (2014) 4, 481-484.
- [6] Totten, G.E. Steel Heat Treatment: Metallurgy and Technologies, CRC Press, Taylor & Francis Group, Boca Raton, 2007.
- [7] Novak, S., Košec, B., Rečnik, S., Nagode, A. Kosec, B., Karpe, B. Optimisation of technological parameters of gas chamber furnace for rolls heat treatment, *IRT 3000* 12 (2017) 70, 276-279.
- [8] R. Celin, D. Kmetič Cracks in a roller-bearing. *Metalurgija* 47 (2008) 1, 69-72.
- [9] Kosec, B., Kolenko, T. Temperature field in the working rolls at continuous roll casting of aluminium strips. *Metalurgija* 36 (1997) 4, 215-218.
- [10] Azevedo, C.R.F., Belotti Neto, J. Failure analysis of forged and induction hardened steel cold work rolls *Engineering Failure Analysis*, 11 (2004), 951–966.

Note: The responsible for English language is Paul McGuinness, Ljubljana, Slovenia